



SITUATION REPORT No. 03

Severe Weather Tornado Touchdowns

The Florida State Emergency Response Team

February 2, 2007 Published at 1930 Hrs.

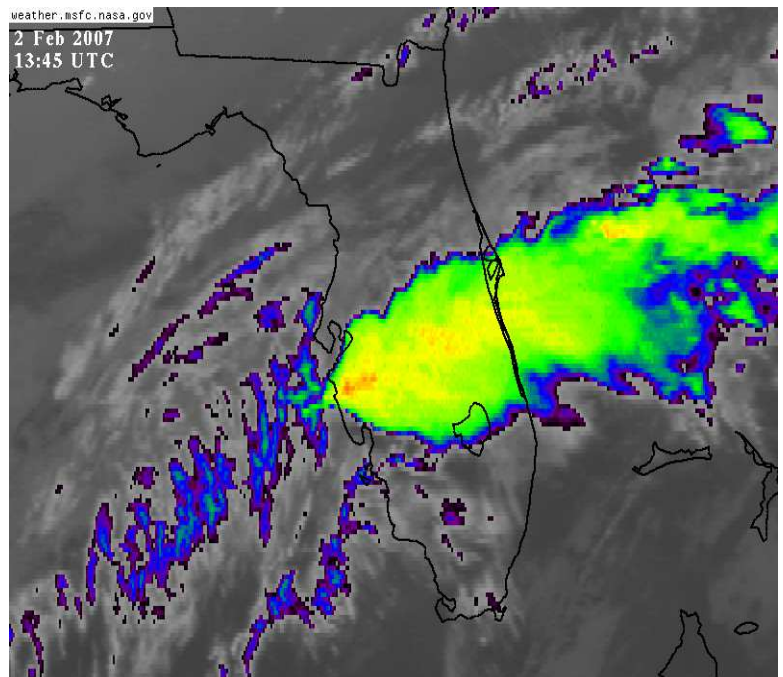
State Emergency Operations Center Level: 1

Operational Period: February 02, 2007-0700 hrs-February 2, 2007-1900 hrs

CURRENT SITUATION:

The State Emergency Operations Center (SEOC) is currently at Level 1 (Full) activation with full ESF's staffing in the State Emergency Operations Center.

There were several reported tornado touchdowns in Lake, Sumter, Volusia, Indian River. Additional impacted counties include Seminole and Marion counties. Storms swept across central Florida early Friday morning, damaging homes, toppling trees and overturning trucks on Interstate 4 (I-4). Powerful winds knocked down trees and power lines. The local utilities are reporting power outages. Damage reports are ongoing as received and will be reported soon.



WEATHER:

Friday: Mostly cloudy skies with lows in the mid 50s.

Saturday: Showers developing during the afternoon and highs nearly steady in the 50s.

Saturday night: Light showers ending towards sunrise with lows around 40.

Sunday: Light showers ending during the morning. Partly cloudy skies in the afternoon with highs in the mid 50s.

Sunday night: Partly cloudy with lows in the mid 30s.

Monday: Partly cloudy with highs around 60.

CONSEQUENCES:

1. **Fatalities** – There are 8 confirmed fatalities reported by the Medical Examiners Office as of 02/02/07 at 7:10 pm
2. **Evacuation** – None at this time
3. **Sheltering** – 2 shelter in Lake County, 2 in Sumter County and 1 in Volusia
4. **School and Government closings** – The following schools are closed:
 - **Volusia County:** Deland, Southwestern Middle School and Starke Elementary.

- **Lake County:** Villages of Lady Lake Elementary School
5. **Power Outages- There are a total of 10,258.**
 6. **Road Closures :** State Road 15A in Lake county

COUNTY ACTIONS:

County	EOC Status	Local State of Emergency	School Closings
Lake	Full	Yes	1 – Village of Lady Lake
Volusia	Partial	Yes	5 – Deland Middle, Southwestern Middle, Stark Elem., Daytona Bch Comm. College, Deltona Lakes Elem.
Sumter	Partial	Yes	No

DAMAGES REPORTED:

- **Lake County:** Two areas of operation – West side of county in the area of The Villages from US301 to the western shore of Lake Griffin, numerous homes and commercial structures damaged, reports of fatalities and injuries; Lake and Marion County Sherriff’s Offices are flying impact area at this time; East side of county in the vicinity of an area known as Paisely from the S side of Ocala National Forest to the St. Johns River, County has lost one of it’s primary radio towers.
- **Volusia County:** two major areas of operations – South of Deland to the intersection of I4 and FL44, unknown number of homes (both manufactured and site built) damaged, County damage to the fair ground agriculture center & the local health department, which is a major health care provider; East side of county in the vicinity of SR44 and FL44 w/ 69 homes reported as damaged, no fatalities and only minor injuries reported, dinner cruise ship reported destroyed.
- **Sumter County:** reports 400 to 500 homes with major damage or destroyed in the vicinity of The Village

STATE ACTIONS:

- The State Emergency Operations Center is currently at a **Level 1** operational from 0700 hrs to 1900
- The State Emergency Response Team is fully staffed
- Mobile Command Vehicle (MCV) is operational in Lake County

- Operations and Plans Sections staff are monitoring the current situation and providing updates as needed
- 5 trucks of water and ice are enroute to Lake County
- Two Points of Distribution (PODS) packages (Lake County)
- Logistical Staging Area (LSA) site have been identified
- **Deployed Personnel:**
- MCV is fully staffed and enroute to Lake County (Tavares)
- EM Services/ESF4&9 are working w/Lake County at the Villages to fulfill request for Task Force 8.
- Tech Rescue at County RD 42/SR44(Lake County/Volusia County Line)
- USAR team has been deployed to Lake/Volusia.

Area Coordinators deployed: 2 in Lake County, 2 in Volusia County

- Executive Order 07-21 was signed by Governor Crist.
- Florida Emergency Information Lines are activated (800) 342-3557
- 5 trucks of water and Ice to Lake County
- Points of Distribution (PODS) packages for Lake County will open on 2/3/07 at 07:30 AM
- Logistical Staging Area (LSA) site in Orlando

FEDERAL ACTIONS:

- Monitoring the situation and placing Emergency Response Teams-A and Federal Incident Response Support Teams on standby

Information & Planning Section: Intel Packages (Summary of Key Issues, Forecast Reports, Incident Action Plans (IAP), Resource Deployment reports, Pre/Post Indicator reports), Situation and Flash Reports are being developed and published as scheduled. Counties are reminded to email their Situation Reports to esf5@inetmail.att.net

Florida Division of Emergency Management Contact Information
Planning Section E-Mail Address: esf5@dca.state.fl.usInternet:
<http://www.floridadisaster.org>