



Flash Report # 1

Severe Weather Event/Tornado
The Florida State Emergency Response Team
October 18, 2007 Published 1300 Hrs.
State Emergency Operations Center Level: **3**



Operational Period: October 18, 2007- 0800 Hrs. – October 18, 2007 1700 Hrs.

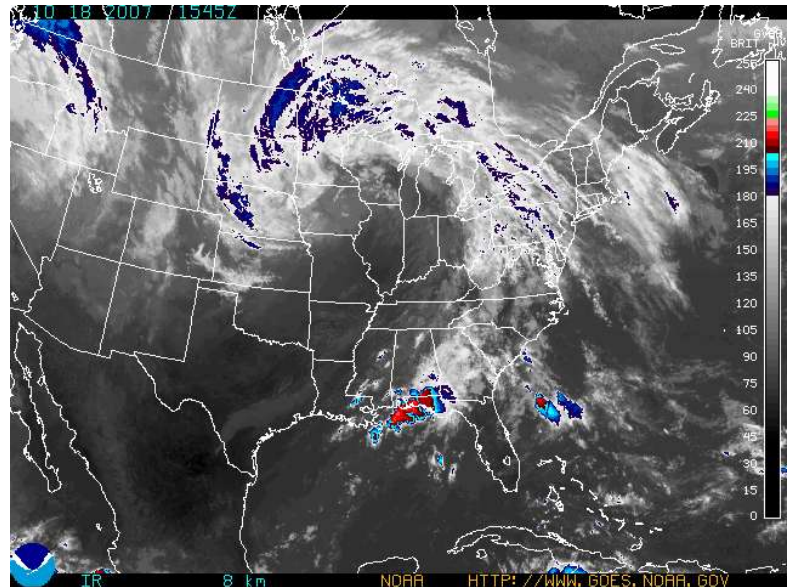
CURRENT SITUATION

Tornado Touchdown in Escambia County...

At 10:16 am cdt the National Weather Service Doppler Radar and storm spotters were tracking a large and extremely dangerous tornado. This tornado was located near downtown Pensacola moving northeast at 15 mph.

A tornado warning remains in effect until 10:45 am cdt for south central Santa Rosa and southeastern Escambia counties. Other locations in the warning include but are not limited to Brent, east Pensacola Heights, Pensacola Regional Airport, Ferry Pass, Pace, Milton and Bagdad.

This is an extremely dangerous and life threatening situation. This storm is capable of producing strong to violent tornadoes. If you are in the path of this tornado...take cover immediately!



STATE ACTIONS

- The State Emergency Operations Center is currently at a **Level 3**
- Region 2 Coordinator is enroute to Escambia County to support local operations
- Operations and Plans Sections staff are monitoring the current situation and providing updates as needed

Florida Division of Emergency Management Contact Information
Planning Section E-Mail Address: esf5@fleoc.org
Internet: <http://www.floridadisaster.org>